

# USE OF REDUNDANT CESSPITS



Households which have been connected to mains drainage often have a very valuable asset left over after the completion of the work - the now redundant cesspit.

Why not use it to collect water for the garden\*, or water for washing the car. This will help the environment as well as yourself!

If you intend to utilise your redundant cesspit for functions such as this, then you will need to do the following in the first instance:

- Have your old cesspit steam-cleaned and sterilised by a drain services professional
- Divert appropriate down-pipes from the roofs and gutters to the (now redundant) pipe leading to the cesspit input
- To prevent overflowing, install an exit pipe near the top of the pit designed to run into a soakaway.

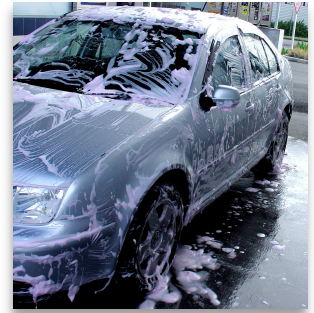
Now you have safe storage for thousands of litres of usable water, saving potable (drinkable) water for the home and assisting in the conservation of the Island's precious water resources.

*\* Please note that edible produce should receive a final wash in potable water before consuming.*

## ■ SOME QUESTIONS ANSWERED

### How do I get the water out?

By using a portable pump with a hose attached, which can be lowered into the open hatch. You could also utilise any existing remote emptying point on the cesspit.



### Can I not install something more permanent?

Of course - it is possible to plumb in a permanent pump, governed by a pressure switch, but the more elaborate your requirements, the more expensive the conversion will be. The ultimate installation would be a network of pipes to irrigate lawns and flowerbeds.

### Is this complicated?

For someone competent at DIY, re-routing plastic domestic pipework is perfectly practicable. However, for more complex schemes, or if you are in any doubt, we would recommend consulting a professional builder or plumber.

**Please ensure that any pipework that is not carrying drinking water must be black in colour and not connected to the Guernsey Water supply pipework. Guernsey Water does not currently support the use of grey water recycling systems for reuse applications inside buildings, due to the risk of contaminating the drinking water.**