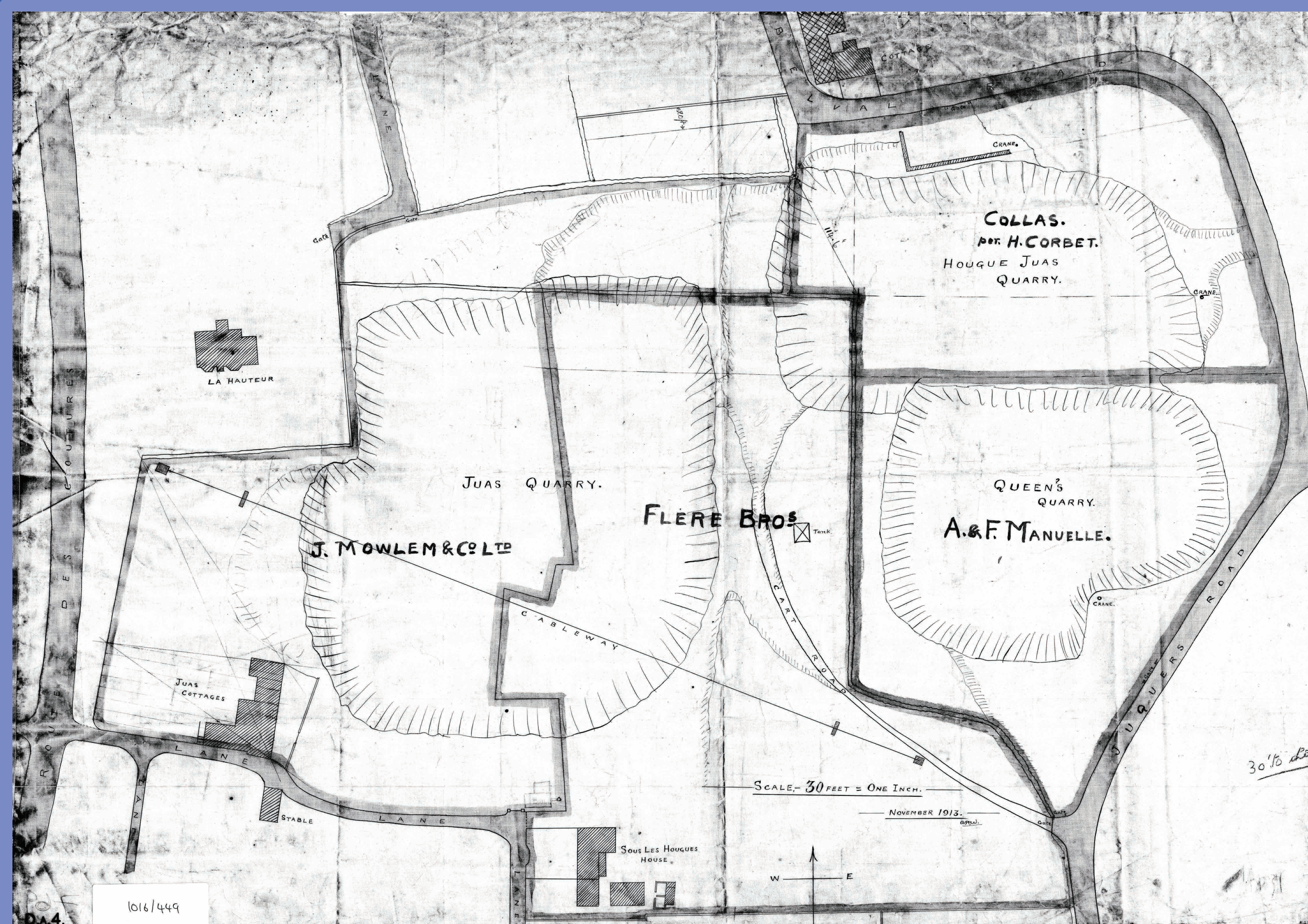


# A short history of Juas

This site was originally part of the island's bustling quarry industry, as many of Guernsey Water's raw water storage reservoirs were. In fact, the existing reservoir was originally three quarries as can be seen in the map, dated 1913, below. The three quarries were known as; Juas, Queens & Hougue Juas.



A site plan dated 1913 showing the original layout of the site

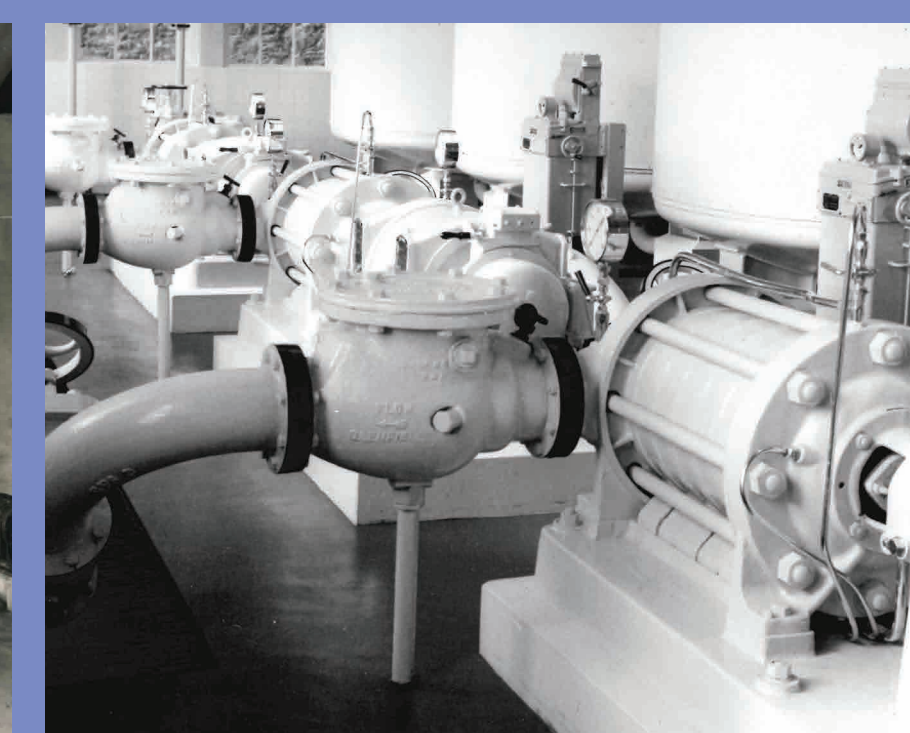
When quarrying stopped at the site, the excavations filled with water, many water filled quarries were utilised for the irrigation of greenhouses and the growing of tomatoes during this time. However, following a prolonged drought in 1918, the water at Juas was, for a short period, put into domestic supply, its waters being referred to as 'clear limpid emerald green'

The use of the water at Juas was relied upon intermittently for domestic use from this point during periods of drought. In 1921, water levels on island were so low, that new pumps were required to ensure the water at the bottom of the quarry could be reached!

As a result of the Island's reliance on Juas as a valuable water resource in times of need, the site was purchased by the States of Guernsey Water Board in 1933. A new pump, the first electrical pump to be installed on site, was fitted. During 1933, Juas was pumping water to domestic water supplies across St Peter Port.

These shots were taken during the construction of the pumping station during the 1950's

(This building is now the site's chemical store)



The pumps installed during the 1950's

In 1974, work began to construct a new water treatment works (WTW) at Juas, replacing the earlier pressure filters with dual media filter beds and chemical aided clarification. The new water treatment works was opened in 1976 and remained in operation until 2013, when it was decommissioned having been used as a secondary backup for some time.

Between 1950 & 1960 the pumping station at Juas was rebuilt, and its capacity increased from  $\frac{1}{2}$  million gallons per day to  $1\frac{1}{2}$  million gallons per day. Today it is capable of pumping 2.2 million gallons into the public water supply daily! You can see the site during construction here.



Construction of the new WTW nearing completion – 1976



The pump house at Juas WTW – 2019



The chemical store at Juas WTW – 2019

(Originally the 1950's built pump house)

Work to recommission the works and bring it back into public supply began in 2017 following a review of Guernsey Water's water treatment strategy. The works were completed and put into supply early 2019, providing water to the Northern zone of the Island.